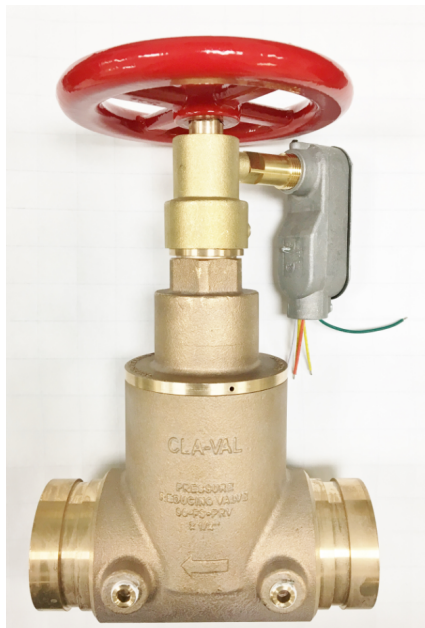




MODEL-90-FS-PRV-25S Straight Pattern

Factory Set (2-1/2-inch) Pressure Reducing Valve



- Sensitive and Accurate Pressure Control
- Complies with NFPA for Class I Systems
- UL/ ULC Listed

The Cla-Val 2 ½” Model 90-FS-PRV Is a UL/ULC listed Factory Set pressure reducing valve which can be used as a standpipe valve, floor control valve and a checking device.

The valve is in compliance with NFPA for Class I systems and can handle “Flow” and “No Flow” conditions and rated for systems up to a maximum inlet pressure of 400 psi.

A brass body is standard but can be supplied with a chrome plate finish. An optional Supervisory Switch is available at an additional charge.



End Connection Options

- Female NPT x Male Hose - Angle - (FM)
- Female NPT x Female NPT- Straight - (SF)
- Groove x Groove - Angle - (GG)
- Groove x Groove -Straight -(SG)
- Groove x Male Outlet -Angle - (GM)

*When protecting life
and property, count on Cla-Val*

The Cla-Val Company Valve Selection and Sizing Program is available upon request