

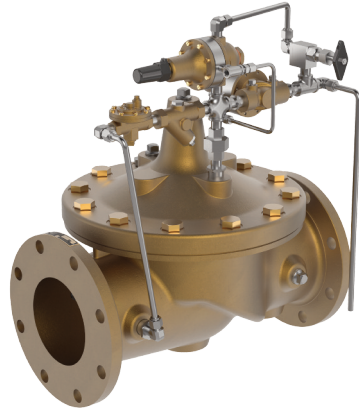


— MODEL — **50-49**

Seawater Service Pump Start Pressure Relief Valve



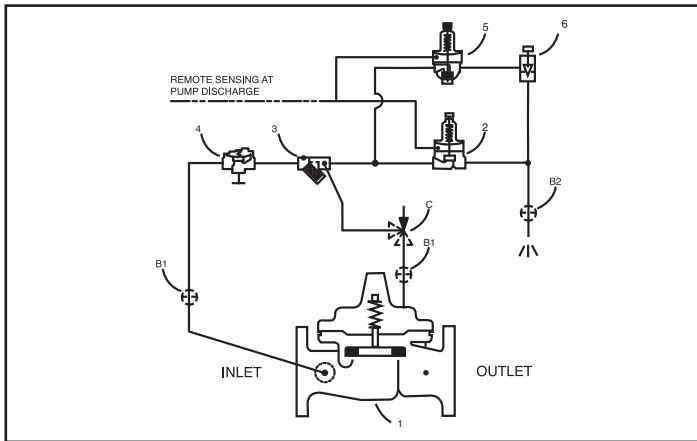
Type Approved



- Seawater Service Materials
- Reduced Cavitation Design
- Drip-tight, Positive Seating Action
- Globe or Angle Pattern for Model 50-49
- Every Valve Factory-Tested
- Three Year Warranty

Cla-Val Model 50-49 Pump Start / Pressure Relief Valve provides pump and pipeline protection during pump start sequence and pump operation when discharge pressure rises to unsafe levels.

Cla-Val Model 50-49 Pump Start / Pressure Relief Valve available in sizes 2" - 36" in both globe and angle pattern.



Operation:

The Model 50-49 has both a normally open and normally closed pilot controls. The valve mounts on a pipe tee at the pump discharge and provides pipeline protection at pump start-up through the normally open pilot control. This pilot will be open to vent the relief valve cover chamber and enable the relief valve to be open at pump start. When the pump first starts, the relief valve relieves both air and start-up water pressure to atmosphere and protects the pump discharge piping from accelerated pressure spikes. The spring loaded pilot with adjustable spring range will slowly close and divert the system pressure into system eliminating unsafe pressure spikes which can damage or rupture discharge piping.

Should the discharge pump pressure continue to rise due to little or no system demand, the normally closed pilot provides overpressure protection by relieving excess pressure to atmosphere as long as the relief valve inlet pressure is greater than the pilot pressure setting. This pilot has various adjustable spring ranges to meet the system pressure requirements.

Materials:

Main Valve Body & Cover:

- Ductile Iron ASTM A-536
- Cast Steel ASTM A216-WCB
- Naval Bronze ASTM B61
- Stainless Steel ASTM A743-CF-8M
- Ni. AL. Bronze ASTM B148

Main Valve Trim:

ASTM B61 Bronze Seat, Monel Trim

Pilot Control System:

- Cast Bronze with Monel Trim
- Monel, Super Duplex Stainless Steel Optional
- Stainless Steel 316 Tubing & Fittings

Schematic Diagram

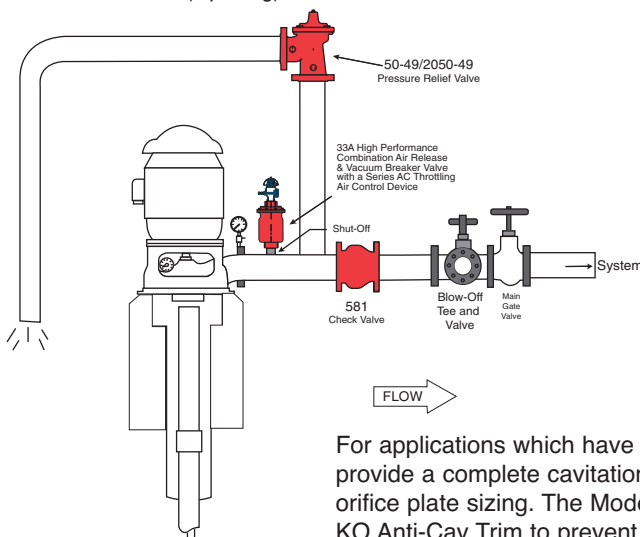
Item Description

- 100S/2100S Hytrol (Main Valve)
- CRL Pressure Relief Control
- X44A Strainer & Orifice Assy
- 81-01 Check Valve
- CRA Pressure Reducing Control
- CNA Needle Valve (Opening)

Optional Features

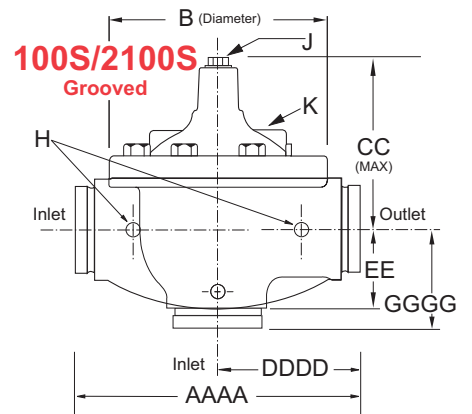
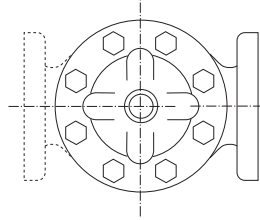
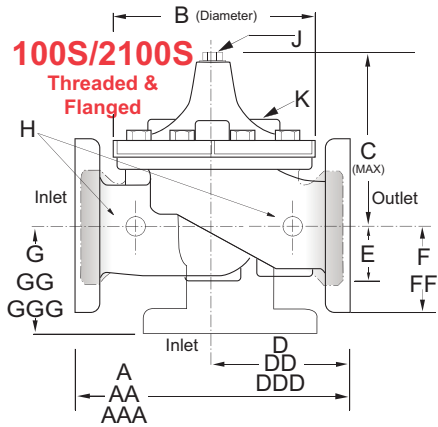
Item Description

- B CK2 (Isolation Valves)
- C CV Flow Control (Closing)



For applications which have cavitation issues, Cla-Val can provide a complete cavitation analysis and recommend orifice plate sizing. The Model 50-49 can be fitted with KO Anti-Cav Trim to prevent cavitation.

Model 50-49 Dimensions



Valve Size (Inches)	1	1 1/4	1 1/2	2	2 1/2	3	4	6	8	10	12	14	16	18	20	24	30	36
A Threaded	7.25	7.25	7.25	9.38	11.00	12.50	—	—	—	—	—	—	—	—	—	—	—	—
AA 150 ANSI	—	—	8.50	9.38	11.00	12.00	15.00	20.00	25.38	29.75	34.00	39.00	41.38	46.00	52.00	61.50	63.00	76.00
AAA 300 ANSI	—	—	9.00	10.00	11.62	13.25	15.62	21.00	26.38	31.12	35.50	40.50	43.50	47.64	53.62	63.24	64.50	76.00
AAAA Grooved End	—	—	8.50	9.00	11.00	12.50	15.00	20.00	25.38	—	—	—	—	—	—	—	—	—
B Dia.	5.62	5.62	5.62	6.62	8.00	9.12	11.50	15.75	20.00	23.62	28.00	32.75	35.50	41.50	45.00	53.16	56.00	66.00
C Max.	5.50	5.50	5.50	6.50	7.56	8.19	10.62	13.38	16.00	17.12	20.88	24.19	25.00	39.06	41.90	43.93	54.60	61.50
CC Max. Grooved End	—	—	4.75	5.75	6.88	7.25	9.31	12.12	14.62	—	—	—	—	—	—	—	—	—
D Threaded	3.25	3.25	3.25	4.75	5.50	6.25	—	—	—	—	—	—	—	—	—	—	—	—
DD 150 ANSI	—	—	4.00	4.75	5.50	6.00	7.50	10.00	12.69	14.88	17.00	19.50	20.81	—	—	30.75	—	—
DDD 300 ANSI	—	—	4.25	5.00	5.88	6.38	7.88	10.50	13.25	15.56	17.75	20.25	21.62	—	—	31.62	—	—
DDDD Grooved End	—	—	—	4.75	—	6.00	7.50	—	—	—	—	—	—	—	—	—	—	—
E	1.12	1.12	1.12	1.50	1.69	2.06	3.19	4.31	5.31	9.25	10.75	12.62	15.50	12.95	15.00	17.75	21.31	24.56
EE Grooved End	—	—	2.00	2.50	2.88	3.12	4.25	6.00	7.56	—	—	—	—	—	—	—	—	—
F 150 ANSI	—	—	2.50	3.00	3.50	3.75	4.50	5.50	6.75	8.00	9.50	10.50	11.75	15.00	16.50	19.25	22.50	25.60
FF 300 ANSI	—	—	3.06	3.25	3.75	4.13	5.00	6.25	7.50	8.75	10.25	11.50	12.75	15.00	16.50	19.25	24.00	25.60
G Threaded	1.88	1.88	1.88	3.25	4.00	4.50	—	—	—	—	—	—	—	—	—	—	—	—
GG 150 ANSI	—	—	4.00	3.25	4.00	4.00	5.00	6.00	8.00	8.62	13.75	14.88	15.69	—	—	22.06	—	—
GGG 300 ANSI	—	—	4.25	3.50	4.31	4.38	5.31	6.50	8.50	9.31	14.50	15.62	16.50	—	—	22.90	—	—
GGGG Grooved End	—	—	—	3.25	—	4.25	5.00	—	—	—	—	—	—	—	—	—	—	—
H NPT Body Tapping	.375	.375	.375	.375	.50	.50	.75	.75	1	1	1	1	1	1	1	1	2	2
J NPT Cover Center Plug	.25	.25	.25	.50	.50	.50	.75	.75	1	1	1.25	1.5	2	1.5	1.5	1.5	2	2
K NPT Cover Tapping	.375	.375	.375	.375	.50	.50	.75	.75	1	1	1	1	1	1	1	1	2	2
Stem Travel	0.4	0.4	0.4	0.6	0.7	0.8	1.1	1.7	2.3	2.8	3.4	4.0	4.5	5.1	5.63	6.75	7.5	8.5
Approx. Ship Wt. Lbs.	15	15	15	35	50	70	140	285	500	780	1165	1600	2265	2982	3900	6200	7703	11720

Model 50-49 Functional Data (Uses Basic Valve Model 100-01)

Valve Size		Inches	1	1 1/4	1 1/2	2	2 1/2	3	4	6	8	10	12	14	16	18	20	24	30	36
		mm.	25	32	40	50	65	80	100	150	200	250	300	350	400	450	500	600	750	900
C _v Factor	Globe Pattern	Gal./Min.(gpm.)	13.3	30	32	54	85	115	200	440	770	1245	1725	2300	3130	3725	5345	7655	10150	14020
		Litres/Sec. (l/s.)	3.2	7.2	7.7	13	20	28	48	106	185	299	414	552	752	894	1286	1837	2436	3200
	Angle Pattern	Gal./Min.(gpm.)	27	27	29	61	101	139	240	541	990	1575	2500*	3060*	4200*	—	—	—	—	—
		Litres/Sec. (l/s.)	6.5	6.5	7	15	24	33	58	130	238	378	600	734	1008	—	—	—	—	—
Equivalent Length of Pipe	Globe Pattern	Feet (ft.)	23	19	37	51	53	85	116	211	291	347	467	422	503	612	595	628	1181	2285
		Meters (m.)	7.1	5.7	12	15.5	16	26	35	64	89	106	142	129	154	187	181	192	552	569
	Angle Pattern	Feet (ft.)	28	28	46	40	37	58	80	139	176	217	222*	238*	247*	—	—	—	—	—
		Meters (m.)	8.7	8.7	14	12	11	18	25	43	54	66	68	73	75	—	—	—	—	—
K Factor	Globe Pattern	6.1	3.6	5.9	5.6	4.6	6.0	5.9	6.2	6.1	5.8	6.1	5.0	5.2	5.2	4.6	4.0	5.3	7.8	
	Angle Pattern	4.4	4.4	7.1	4.4	3.3	4.1	4.1	4.1	3.7	3.6	2.9	2.8	2.6	—	—	—	—	—	
Liquid Displaced from Cover Chamber When Valve Opens	Fl. Oz	—	—	—	—	—	—	—	—	—	—	—	—	—	—	—	—	—	—	
	U.S. Gal.	.02	.02	.02	.03	.04	.08	.17	.53	1.26	2.51	4.0	6.5	9.6	11	12	29	42	90	
	ml	20.7	75.7	75.7	121	163	303	643	—	—	—	—	—	—	—	—	—	—	—	
	Litres	—	—	—	—	—	—	—	2.0	4.8	9.5	15.1	24.6	36.2	41.6	45.4	109.8	197	340	

Valve Capacity

Valve Size (inches)	1	1 1/4	1 1/2	2	2 1/2	3	4	6	8	10	12	14	16	18	20	24	30	36
Max. Continuous GPM	55	93	125	210	300	460	800	1800	3100	4900	7000	8400	11000	14000	17000	25000	42000	50000
Max Surge GPM	120	210	280	470	670	1000	1800	4000	7000	11000	16000	19000	25000	31000	39000	56500	63000	85000