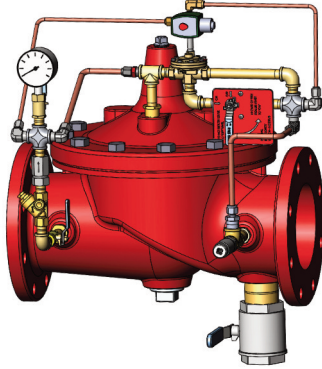




— MODEL — **134-DL**

# Solenoid Operated Deluge Valve with Manual Reset



- **UL Listed / ULC Listed / CCCF Approved**
- **Fast Acting Solenoid Control**
- **Reliable Drip Tight Shut-off**
- **Integral Manual Override and Manual Reset Pilot Features**

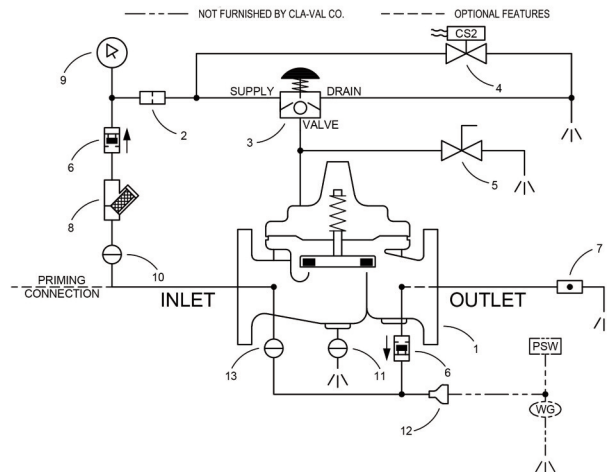
The Cla-Val Model 134-DL Fire Deluge Solenoid Control Valve with Manual Reset provides on-off control of water flow to dry-pipe type fire deluge systems. The 134-DL consists of UL Listed Hytrol main valve, three-way solenoid control, auxiliary pilot valve, pressure switch for remote verification.

The Latching Deluge Pilot is a normally closed, 3-way, 2-position pneumatic or hydraulically operated pilot. The Latching Deluge Pilot (3) must be manually set to close the main valve. To establish the set position, a minimum of 30 psi must be applied to the pilot sensing port and the knob must be pulled on until it sets.

Solenoid operation of main valve is specified on order as de-energize solenoid to open (normally open) or energize solenoid to open (normally closed).

## Schematic Diagram

Item	Description
1	100G/2100G Hytrol Main Valve
2	X58C Restriction Assembly
3	Manual Reset Pilot Valve
4	CS2 Solenoid Control
5	CK2 Cock - Manual Bypass
6	CDC Check Valve
7	Drain Valve, Ball Drip
8	X43 "Y" Strainer
9	X141 Pressure Gauge
10	CK2 Cock - Priming Valve
11	CK2 Cock - Inlet Drain Valve
12	Bell Reducer
13	CK2 Cock (Checker Valve)



## Customer Supplied Items:

- PSW - Pressure Switch
- WG - Water Gong

## Specifications

**Sizes** Globe: 3" - 12" (80mm-300mm) flanged  
Angle: 3" - 12" (80mm-300mm) flanged

**End Details** Ductile Iron 150 ANSI B16.42 flanged\*

**Pressure Ratings** 150 class, 250 psi maximum (Ductile Iron)  
300 class, 300 psi maximum (Ductile Iron)

**Temperature Range** Water: to 180° F. Max

**Rubber Parts** Buna-N

## MATERIALS

### Main valve body & cover:

Ductile Iron ASTM A-536\*

### Main valve trim:

Bronze / Stainless Steel

### Pilot control system:

Cast Bronze ASTM B62  
Stainless Steel Trim

### Tubing and fittings:

Bronze and Copper

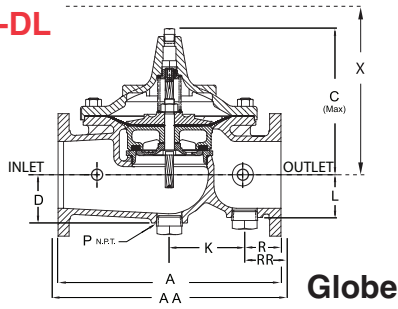
## Functional Data

Valve Size		Inchess	3	4	6	8	10	12
		mm	80	100	150	200	250	300
C <sub>v</sub> Factor	Globe Pattern	Gal./Min (gpm)	115	200	440	770	1245	1725
		Litre/ Sec (l/s)	27.6	48	105.6	184.8	299	414
	Angle Pattern	Gal./Min (gpm)	139	240	451	990	1575	2500
		Litre/ Sec (l/s)	33.4	58	130	238	378	600

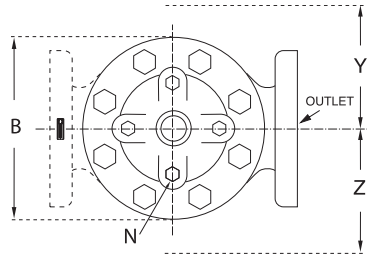
## Cover Capacity

Valve Size	Displacement
3"	.080 gal
4"	.169 gal
6"	.531 gal
8"	1.26 gal
10"	2.51 gal
12"	4.0 gal

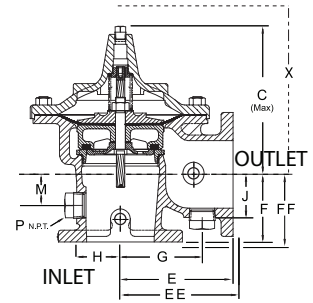
# 134-DL



**Globe**



**Angle**



Valve Size (Inches)	3	4	6	8	10
A 150 ANSI	12.00	15.00	20.00	25.38	29.75
AA 300 ANSI	13.25	15.62	21.00	26.38	31.12
B Dia.	9.12	11.50	15.75	20.00	23.62
C Max.	8.19	10.62	13.38	16.00	17.12
D	2.56	3.19	4.31	5.16	8.50
E 150 ANSI	7.00	8.50	10.00	12.69	14.88
EE 300 ANSI	--	8.81	10.50	13.19	--
F 150 ANSI	4.00	4.97	6.00	8.00	8.62
FF 300 ANSI	--	5.28	6.50	8.50	--
G	4.75	5.94	7.25	8.50	10.50
H	2.69	2.81	3.88	5.31	6.56
J	2.56	2.81	3.81	4.81	5.81
K	7.00	4.03	6.75	17.00	15.50
L	2.56	2.81	3.81	4.81	8.50
M	1.75	2.41	2.75	4.00	4.24
N NPT	1/2"-14	3/4"-14	3/4"-14	1"-11 1/2	1"-11 1/2
P NPT	1-1/4"-11 1/2	2"-11 1/2"			
R 150 ANSI	2.50	3.47	3.25	4.19	7.12
RR 300 ANSI	3.12	3.78	3.75	4.69	7.81
X Pilot System	15.00	17.00	29.00	31.00	33.00
Y Pilot System	11.00	12.00	20.00	22.00	24.00
Z Pilot System	11.00	12.00	20.00	22.00	24.00

Valve Size (mm)	80	100	150	200	250
A 150 ANSI	305	381	508	645	756
AA 300 ANSI	337	397	533	670	791
B Dia.	232	292	400	508	600
C Max.	208	270	340	406	435
D	65	81	110	131	216
E 150 ANSI	178	216	254	322	378
EE 300 ANSI	--	224	267	350	--
F 150 ANSI	102	126	152	203	219
FF 300 ANSI	--	134	165	216	--
G	121	151	184	216	267
H	68	71	99	135	167
J	65	71	97	122	148
K	178	102	171	432	394
L	65	71	97	122	216
M	45	61	70	102	108
N NPT	1/2"-14	3/4"-14	3/4"-14	1"-11 1/2	1"-11 1/2
P NPT	1-1/4"-11 1/2	2"-11 1/2"			
R 150 ANSI	64	88	83	106	181
RR 300 ANSI	79	96	95	119	198
X Pilot System	381	432	737	787	838
Y Pilot System	279	305	508	559	610
Z Pilot System	279	305	508	559	610

## Pilot System Specifications

Pressure Switch - 316 Stainless Steel - **Optional**

General Purpose enclosure

Optional Explosion-proof enclosure

Optional Main Drain Valve - 2" NPT Bronze

Optional Drip Drain Valve - 1/2" NPT Bronze

Valve-mounted, water-powered, local alarm - **Optional**

UL Listed and FM Approved

Pilot system supply pressure from valve inlet or remote priming source (specify letter F)

Pilot system drain discharge to atmosphere or to valve outlet (specify letter H)

## Solenoid Control\*

Body:

Brass ASTM B283

Enclosure:

NEMA Type 1, 2, 3, 3S, 4, 4X general purpose watertight

NEMA Type 6, 6P, 7, 9 watertight

Explosion Proof available at extra cost

Voltages:

110, 220 -50Hz AC

24, 120, 240, 480 - 60Hz AC

6, 12, 24, 120, 240 - DC

Max. operating pressure differential: 200 psi

Coil:

Insulation molded Class	F
Watts AC	6
AC Volt Amps Inrush	30
AC Volt Amps Holding	16
Watts DC	10.6

## Solenoid

Manual operator available at extra cost.

## When Ordering, Please Specify

- Catalog No. 134-DL
- Valve Size
- Pattern - Globe or Angle
- Pressure Class
- Material Desired
- Schematic Options
- Energized or De-energized to Open Main Valve
- Solenoid Enclosure, Voltage & Hertz
- When Vertically Installed - Vertical Flow Direction



## CLA-VAL

1701 Placentia Avenue • Costa Mesa CA 92627

800-942-6326 • Fax: 949-548-5441 • Web Site: cla-val.com • E-mail: info@cla-val.com

### CLA-VAL CANADA

4687 Christie Drive  
Beamsville, Ontario  
Canada L0R 1B4  
Phone: 905-563-4963  
E-mail sales@cla-val.ca

### CLA-VAL EUROPE

Chemin des Mésanges 1  
CH-1032 Romanel/  
Lausanne, Switzerland  
Phone: 41-21-643-15-55  
E-mail: cla-val@cla-val.ch

### CLA-VAL UK

Dainton House, Goods Station Road  
Tunbridge Wells  
Kent TN1 2 DH England  
Phone: 44-1892-514-400  
E-mail: info@cla-val.co.uk

### CLA-VAL FRANCE

Porte du Grand Lyon 1  
ZAC du Champ du Périer  
France - 01700 Neyron  
Phone: 33-4-72-25-92-93  
E-mail: cla-val@cla-val.fr

### CLA-VAL PACIFIC

45 Kennaway Road  
Woolston, Christchurch, 8023  
New Zealand  
Phone: 64-39644860  
www.cla-valpacific.com  
E-mail: info@cla-valpacific.com