



—MODEL— **349GF**

Ground Fueling Strainer Ball Valve



**Cla-Val
Model 349GF
Strainer Ball Valve**

- Quarter turn, full port Ball Valve.
- Strainer fits within ball.
- Side port allows for visual checking of Strainer with no fuel spillage.
- Side port opens for Strainer cleaning with minimal exposure to uncontained fuel.
- Bolts to Cla-Val model 341GF and 347GF Nozzles.
- Ball and Strainer can be reversed for de-fuel operations. Safety lock prevents unintentional reversal.
- Strong enough to withstand hydrostatic hose testing in closed position.
- Has swivel joint inlet with internal threads for connecting to delivery hose.

The CLA-VAL Model 349GF Strainer Ball Valve bolts to the inlet of any CLA-VAL Nozzle (and some Nozzles from other manufacturers) and allows for quick and easy Strainer checks.

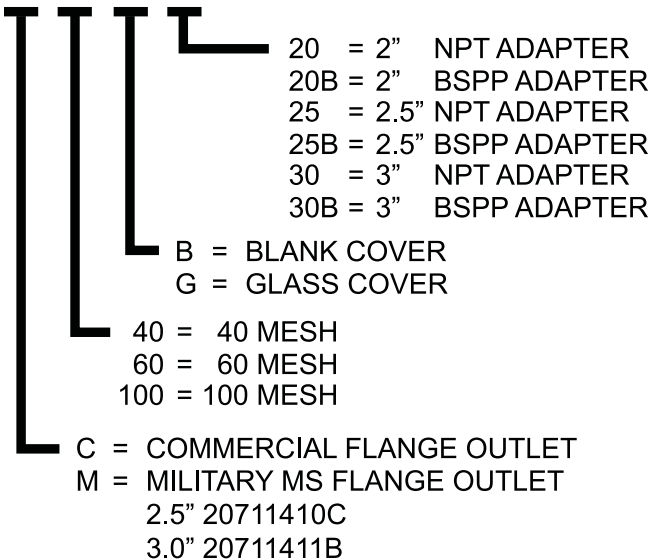
349GF MODEL NUMBERING SCHEMES:

CLA-VAL MODEL 349GF STRAINER BALL VALVE:

Configure the Model Number as shown below to include the desired optional features:

MODEL NUMBER EXPLANATION

349GF-



The CLA-VAL Model 349GF is a quarter-turn hose end ball valve with three functions. In the normal flowing position, fuel flows through the full-port Ball and through the Strainer within the Ball. In the inspection position, the ball valve is in the closed position and the Strainer can be visually checked for contamination (if fitted with the optional Glass Cover). The Cover can be removed and the Strainer removed from within the Ball for cleaning. In the third position, the Ball and Strainer are reversed for de-fueling operations. There is a safety lock that must be overcome to turn the Ball to the de-fuel position.

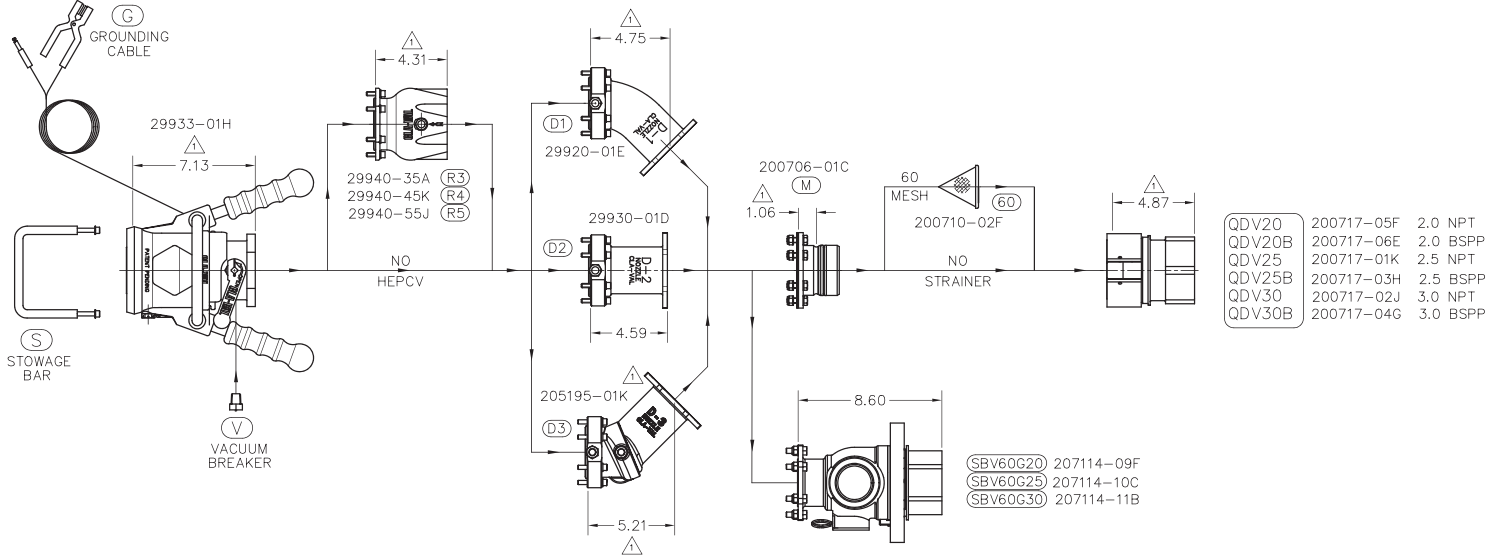
Standard features of the CLA-VAL Model 349GF Strainer Ball Valve are a Bump Ring and solid Aluminum Side Port Cover. A Glass Inspection Cover is optional.

The Commercial version (Model 349GF) comes with a Swivel outlet or a flanged outlet. The outlet end of the Military Strainer Ball Valve has a flange that bolts to all D-1, D-2 and D-3 Swivel Inlets. Inlet threads can be 2", 2.5" or 3" and are available as NPT or BSPP threads.

EXAMPLE: Model 349GF-M60G25 has a Military Outlet Flange, a 60 Mesh Strainer, a Sight Glass Cover and 2.5" NPT Inlet Threads.

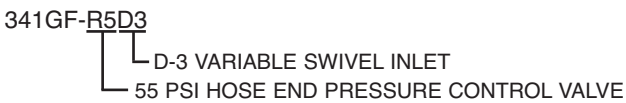
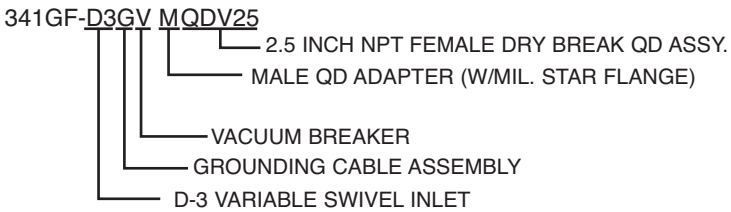
341GF

Military Refueling Nozzle Model Numbering Scheme



Create Complete Model Numbers for Various Applications

It is easy to "customize" a 341GF-D3 to special requirements. Complete model numbers always begin with "341GF-D3". Add your option selections to this base model number, following the flow chart above from left to right. See example below.



AVAILABLE OPTIONS ADDED TO 341GF-

G	Ground Cable Assembly
V	Vacuum Breaker
R3	35 PSI Pressure Regulator
R4	45 PSI Pressure Regulator
R5	55 PSI Pressure Regulator
D-3	D-3 Variable Swivel Inlet
M	Male Quick Disconnect Adapter (Mil. Star Flange)
40	40 Mesh Strainer
60	60 Mesh Strainer
100	100 Mesh Strainer
SBV40	Strainer Ball Valve w/40 Mesh Strainer
SBV60	Strainer Ball Valve w/60 Mesh Strainer
SBV100	Strainer Ball Valve w/100 Mesh Strainer
QDV25	2.5 Inch NPT Female Dry Break QD Assy.
QDV30	3 Inch NPT Female Dry Break QD Assy.
QDV25B	2.5 Inch BSPP Female Dry Break QD Assy.
QDV30B	3 Inch BSPP Female Dry Break QD Assy.
SBV60G20	349GF GF Strainer Ball Valve
SBV60G25	349GF GF Strainer Ball Valve
SBV60G30	349GF GF Strainer Ball Valve