



Float Control For Closed Tanks with X75A Float Tester Assembly



- Accurate Liquid Level Control
- Fully Hydraulic Operation
- Simple Design, Easy Maintenance
- No Lubrication Necessary
- No Gears, No Mechanical Linkage Between Valve and Control

The Cla-Val Model CFC2 Float Control is a float-actuated, multi-port pilot control which provides non-modulating, two-position, on-off operation. It is used primarily to operate remotely located Cla-Val Valves requiring three-way or four-way pilot valve operation. Designed for use in closed tanks, this control operates on a minimum level change of approximately one inch. Maximum level change of five and one-half inches is needed for full capacity.

Note: We recommend protecting the control tubing and valve from freezing temperatures.

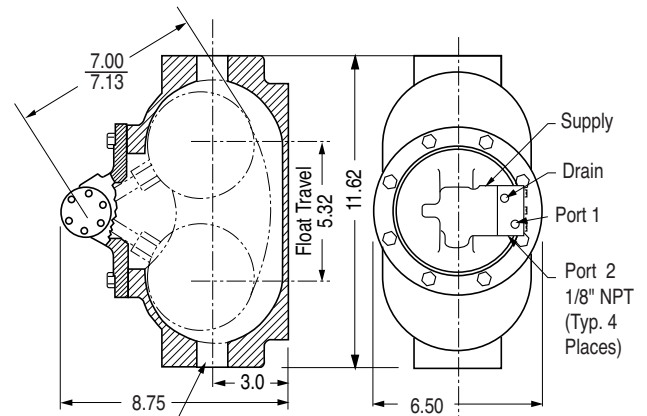
Specifications

Control Piping Connections 1/8" NPT
Reservoir Connections 1" NPT
Pressure Rating 0-150 psi
Temperature Rating Water: to 180°F.
Materials In contact with operating fluid:
 Brass, Stainless Steel, Monel, with Buna-N® Seals
 Float chamber: Cast Iron
 Pilot valve housing: Bronze
 Materials in contact with operating fluid: Brass, Stainless Steel, Monel with Buna-N® Seals

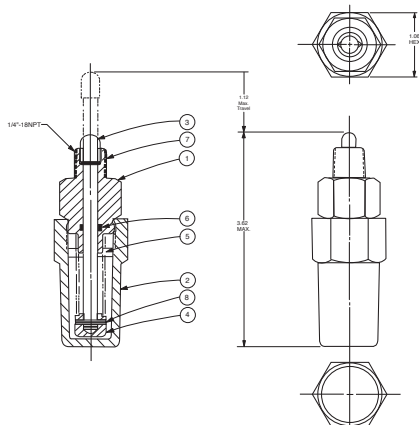
Level Differential Approximately 1" minimum required to change pilot valve operation. 5 5/8" required to develop full capacity.
Operating Fluids Clean liquids or gases compatible with specified materials.
Shipping Weight 12 lbs.

Float ball: Stainless Steel
Float arm: Brass
 Other material available: Cast steel or aluminum chamber and pilot valve housing. All stainless steel

Dimensions (In Inches)



Reservoir Connection
1" NPT (Typ. Both Ends 2 Places)

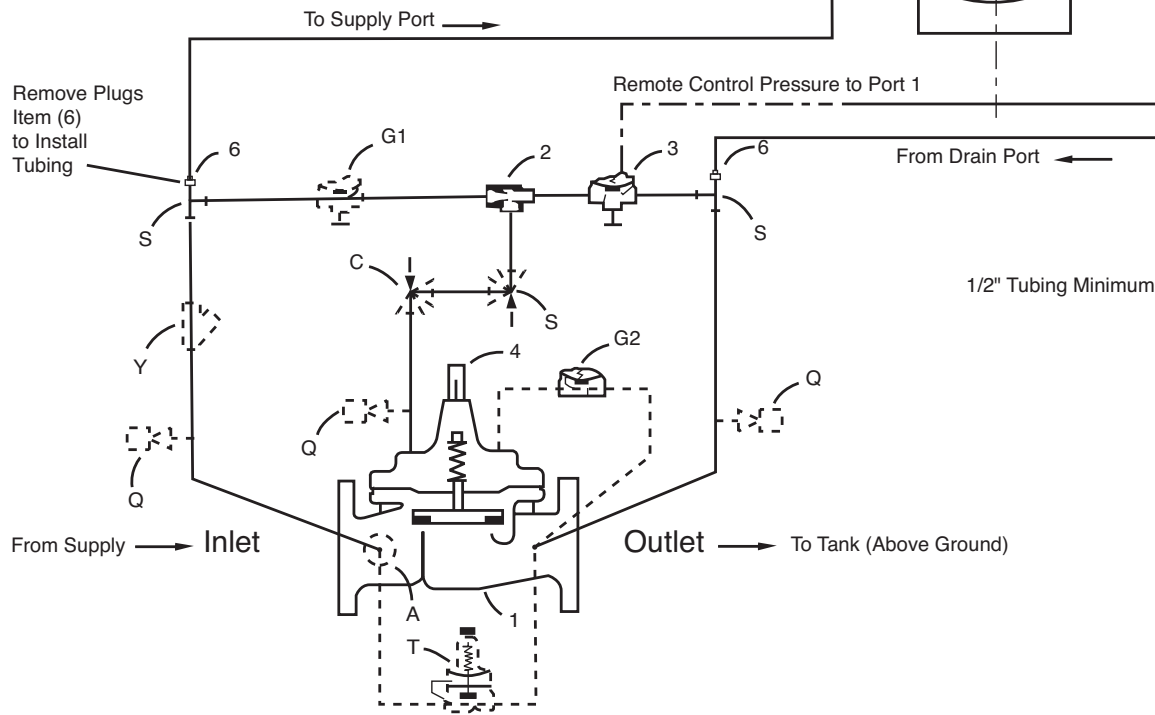
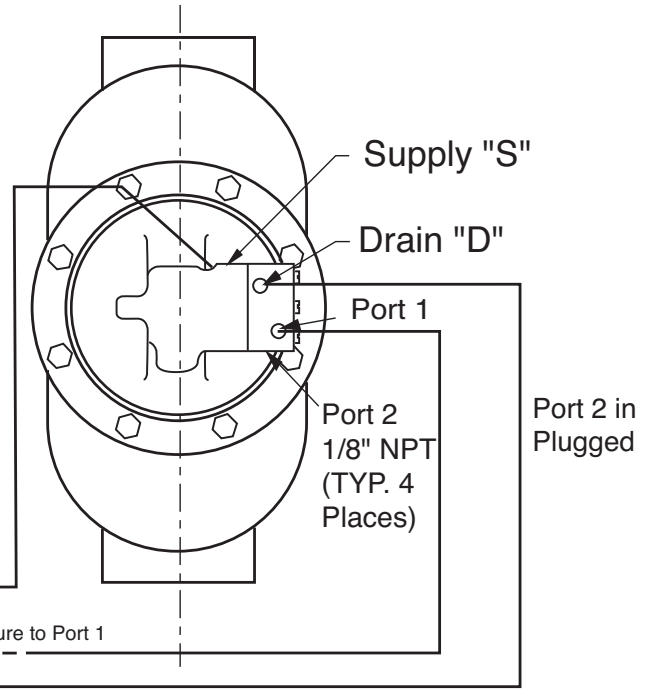
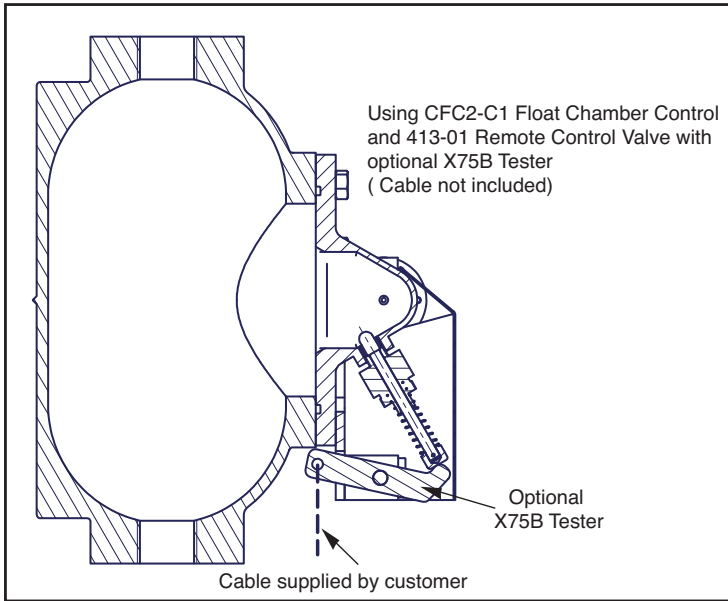


ITEM NO	DESCRIPTION	QTY
1	PLUG GUIDE	1
2	CAP	1
3	STEM RISER	1
4	BUTTON	1
5	SPRING	1
6	O-RING	1
7	ROLLPIN	1
8	ROLLPIN	1

X75A Float Tester Assembly



Typical High Level Shutoff Hook-up For Aviation Fueling Valve Applications



CLA-VAL

PO Box 1325 Newport Beach CA 92659-0325
 Phone: 949-722-4800 • Fax: 949-548-5441

CLA-VAL CANADA

4687 Christie Drive
 Beamsville, Ontario
 Canada L0R 1B4
 Phone: 905-563-4963
 Fax: 905-563-4040

CLA-VAL EUROPE

Chemin des Mesanges 1
 CH-1032 Romanel/
 Lausanne, Switzerland
 Phone: 41-21-643-15-55
 Fax: 41-21-643-15-50

©COPYRIGHT CLA-VAL 2011 Printed in USA
 Specifications subject to change without notice.

www.cla-val.com

Represented By: